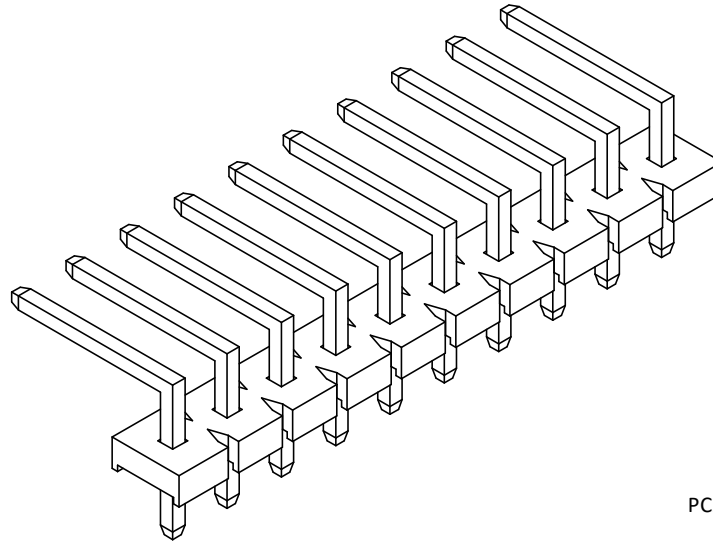
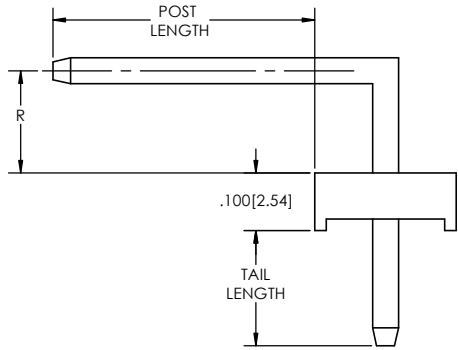
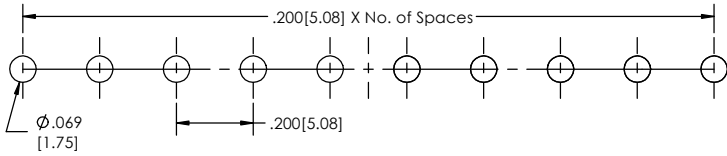
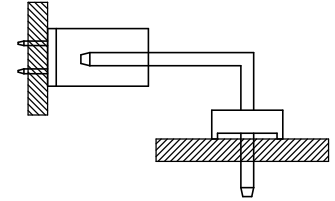


**Recommended P.C. Board Layout**  
SCALE 4:1



**APPLICATION**



PC200HR - **XX** - **S** - **XX** - **T** - **LF**  
(A) (B) (C) (D) (E)

- A. Pins Per Row - 1 through 20
- B. Row Specification - S= Single Row
- C. Pin Options - See Pin Options below
- D. Plating Options - See Plating Options below
- E. Lead Free

Mates with:  
PC200S-XX-S-02  
PC200S-XX-S-04

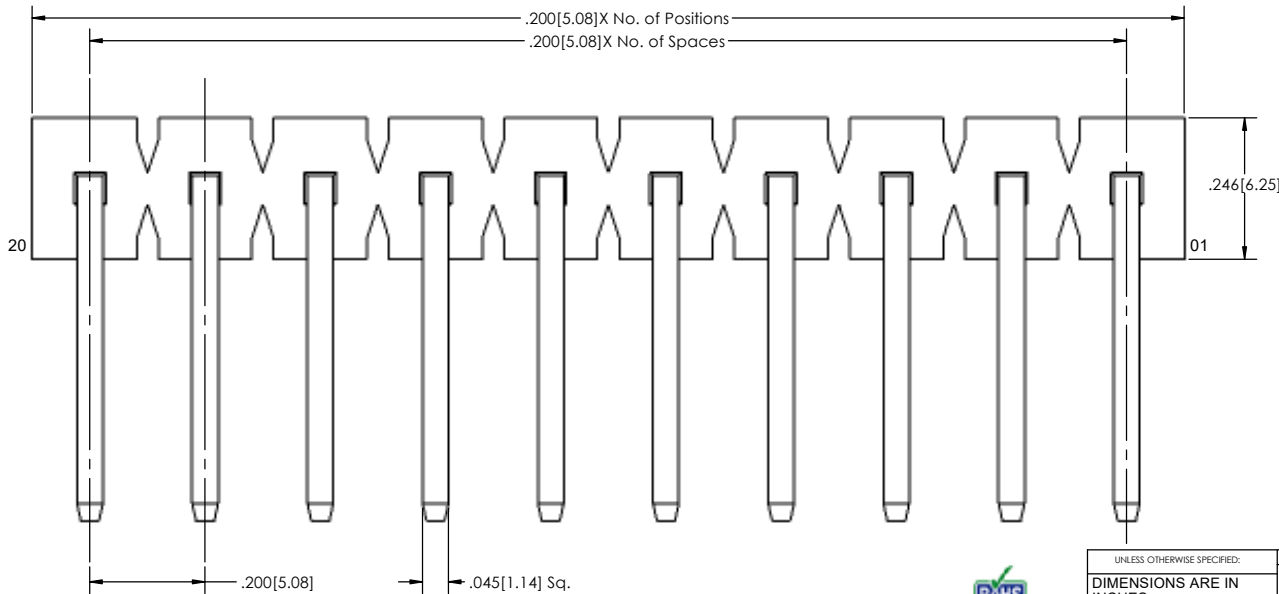
Pin Options		
Post Length	Tail Length	R Dimension
.318[8.08mm]	.180[4.57mm]	.100[2.54mm] 06
.544[13.82mm]	.156[3.96mm]	.195[4.95mm] 14

Plating options  
T Matte Tin all Over

Specifications:  
Current Rating: 7.9 Ampere  
Insulation Resistance: 500M Ohms Min.  
Dielectric Withstanding: 1500V AC  
Contact Resistance: 20M Ohms Max.  
Operation Temperature: -55°C to +125°C  
Max. Process Temperature  
IR Reflow: 280°C up to 10 secs.  
Wave: 250°C up to 10 secs.  
Manual Solder: 380°C up to 5 secs.

Materials:  
Contact Material: Brass  
Insulator Material: LCP, UL94V-0  
Plating: 120µ" Matte Tin over 50µ" (1.27) Ni  
Tails may be clipped to achieve specific dimensions.

Products cut to specific sizes are uncancelable/ nonreturnable.  
Parts are subject to change without notice.



PROPRIETARY AND CONFIDENTIAL  
THE INFORMATION CONTAINED IN THIS DRAWING IS THE SOLE PROPERTY OF Major League Electronics. ANY REPRODUCTION IN PART OR AS A WHOLE WITHOUT THE WRITTEN PERMISSION OF Major League Electronics IS PROHIBITED.

UNLESS OTHERWISE SPECIFIED:		NAME	DATE
DRAWN	EOW		10/11/16
CHECKED	GWG		10/11/16
ENG APPR.			
MFG APPR.			
INTERPRET GEOMETRIC TOLERANCING PER:		ADDRESS:	
MATERIAL:		2533 Centennial Blvd.	
FINISH:		Jeffersonville, In 47130	
APPLICATION		Phone: 812-670-4174	
DO NOT SCALE DRAWING		Fax: 812-670-4175	
		E-Mail: mle@mlelectronics.com	
TITLE: PC200HR			
SIZE DWG. NO.		REV	
C		B	
SCALE 6:1		SHEET 1 OF 1	

